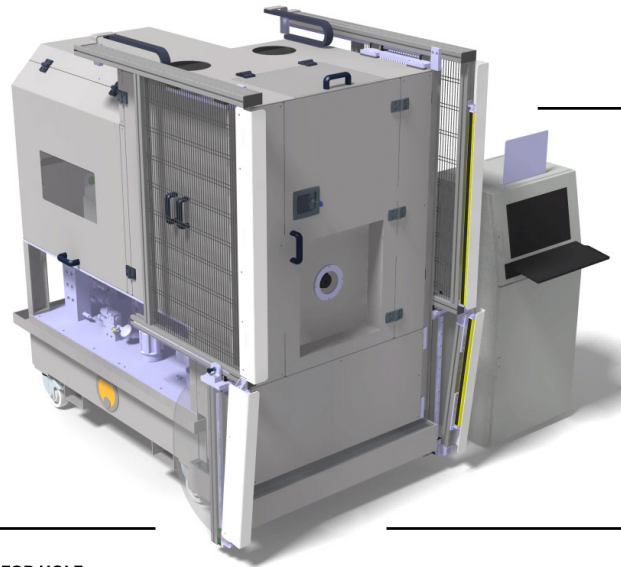


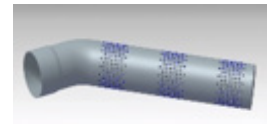
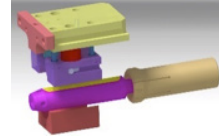
DESCRIPTION OF THE MACHINE

THE MACHINE REALIZES ONE OR A SERIES OF HOLES OR SLOT ON PIPE.
THE PIPE CAN BE STRAIGHT OR BEND WITH THE HOLES NEAR THE BEND.

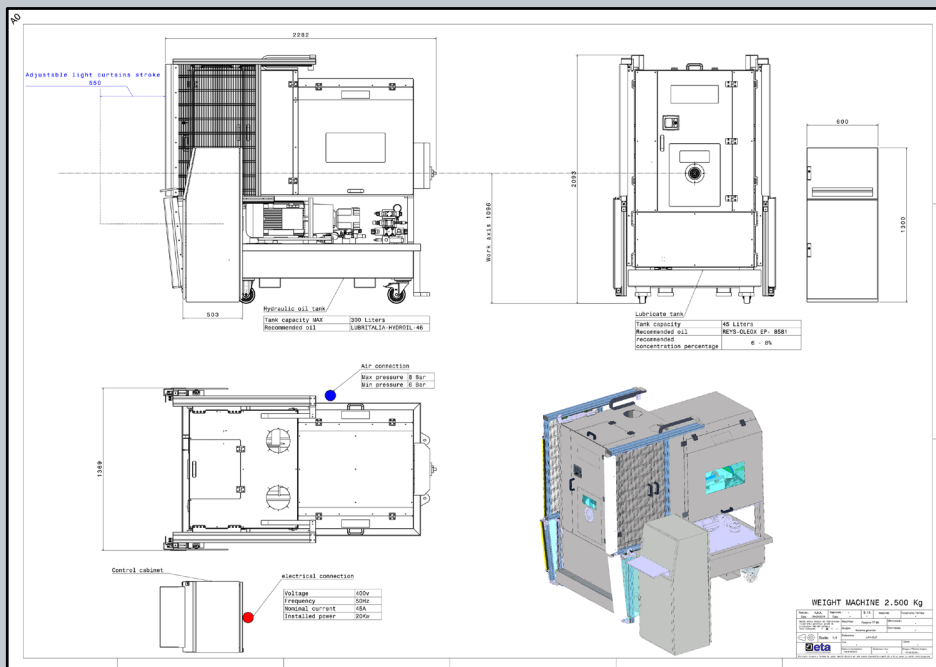
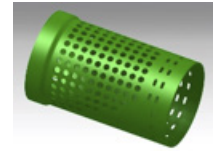
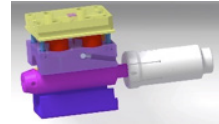


FRAME WITH BUILT-IN HYDRAULIC UNIT
ASSY FOR PIPE MOVEMENT
LUBRIFICATION OF PUNCH
WHEEL KIT FOR MACHINE MOVEMENT
PROGRAMMING KEYBOARD FOR WORKING PROGRAM (TOUCH SCREEN)
CNC CONTROL
ELECTRICAL CABINET
SAFETY COVERS

TOOL FOR HOLE



TOOL FOR HOLE AND SLOT



TECHNICAL SPECIFICATIONS

Tension: 400V	Min hole diameter: Ø3 mm
Frequency: 50Hz	Max pipe thickness: 2.5mm
Auxiliar circuits Tension: 24V	Punching Pow: 24 Ton
Width (mm): 1400 mm	Cycle time: approx 0,33 sec/stroke
Length (mm): 2300 mm	Set up time: approx 10 min
Height (mm): 2100 mm	
Weight Kg: 2200 Kg (without oil)	
Min and Max internal tube diameter: Ø20-150 mm	
Min tube length: 120 mm	
Max tube length: 800 mm	

OPTIONAL

DESCRIPTION

Light Curtain	For work with bend pipe
Remote assistance System	Remote assistance system via internet
Objectivation sensors	Connector for piece presence sensor or special cycles
Including/Excluding punching system	This system allows to include or exclude different punches from the upper punching kit thus letting work once diameter and another time the other diameter
Poka-Yoke system for positioning bend pipe	It's possible perforating the pipe in a precision part respect of the bend
Robot interface	It's possible use this machine in automatic line
Voltmeter	For check in real time the Volt