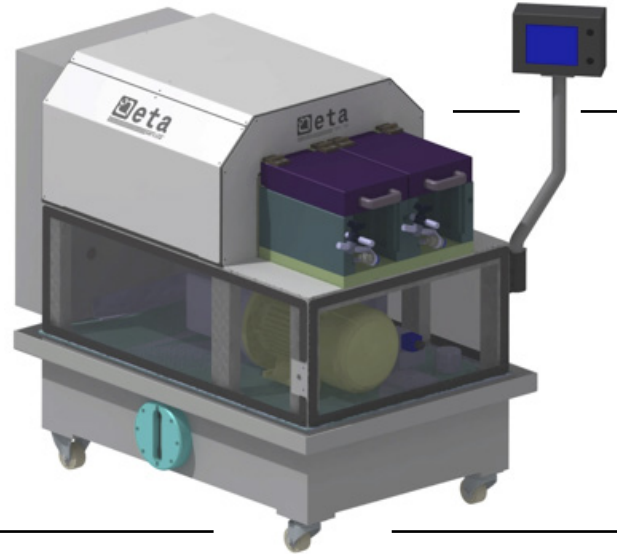


## DESCRIPTION OF THE MACHINE

THE MACHINE IS BUILT TO PERFORM ENLARGEMENT AND / OR REDUCTION ENDS OF PIPES, USING SPECIAL RADIAL TOOLS.

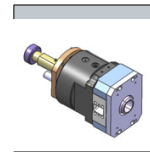
IT'S POSSIBLE TO MAKE SLOTS (TORCA SLOTS OR SIMILAR)

BY SPECIAL TOOL (WORK DIAMETER Ø80)

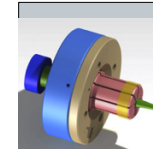


FRAME WITH BUILT-IN HYDRAULIC UNIT
WHEEL KIT FOR MACHINE MOVEMENT
PLC FOR MACHINE CONTROL
PUSH-BUTTON PANEL OR PEDAL BOARD FOR CYCLE START
PROGRAMMING KEYBOARD (TOUCH SCREEN)
ELECTRONIC CONTROL OF WORKING QUOTAS
ELECTRICAL CABINET ON BOARD THE MACHINE
MAGNETIC OR ELECTROMECHANICAL SAFETY SWITCHES
SAFETY COVERS

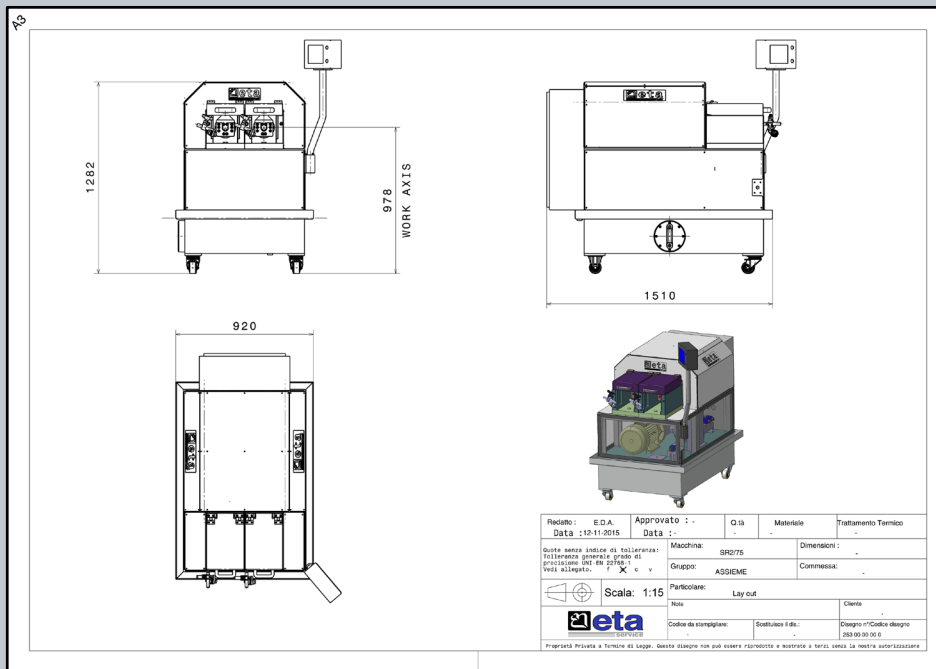
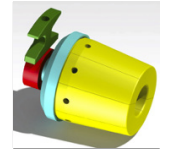
**SLOTING TOOL (SA)**



**CLAMP TO ENLARGE (C/E)**



**CLAMP TO REDUCE (C/R)**



## TECHNICAL SPECIFICATIONS

<b>Tension:</b> 400V	<b>Work diameter:</b> 35-80 mm
<b>Frequency:</b> 50Hz	<b>MAX calibration length:</b> 80mm (dependent thickness / diameter)
<b>Auxiliar circuits Tension:</b> 24V	<b>MAX reduction:</b> 8mm single step
<b>Width (mm):</b> 920	<b>MAX enlargement:</b> 8mm single step
<b>Length (mm):</b> 1510	<b>Pipe Thickness MAX:</b> 2.5mm
<b>Height (mm):</b> 1280	<b>Average machine time (sec):</b> 2/5
<b>Weight Kg:</b> 1100	<b>Average set up time (min):</b> 5

## OPTIONAL

## DESCRIPTION

<b>Hoist</b>	<b>Hoist 200Kg for lifting tools, incorporated in the machine.</b>
<b>Front plate</b>	<b>Table incorporated with the machine for blocking positioners</b>
<b>Remote assistance System</b>	<b>Remote assistance system via internet</b>
<b>Objectivation sensors</b>	<b>Connector for piece presence sensor or special cycles.</b>
<b>OK / NOK piece control heads</b>	<b>Plug for conformal piece checking during the work cycle.</b>