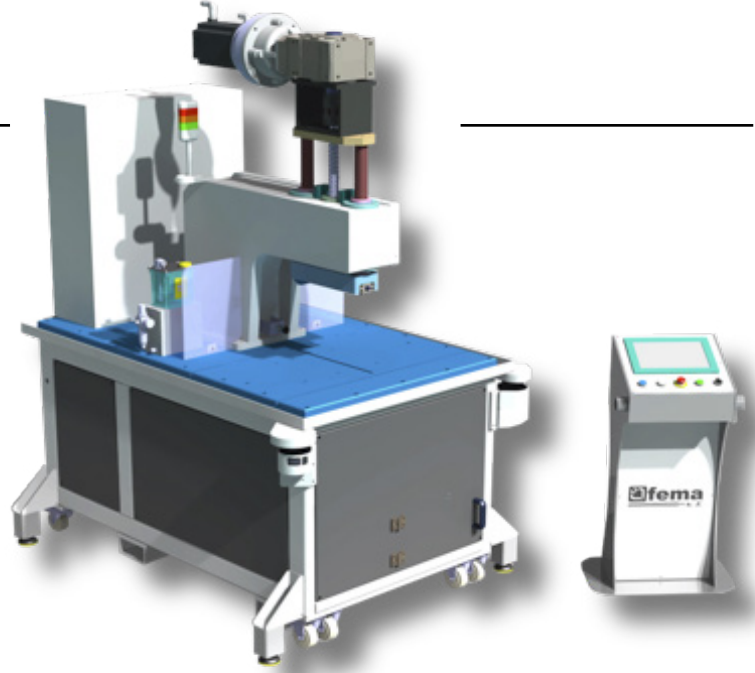


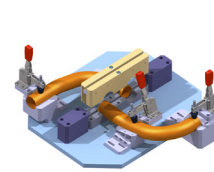
DESCRIPTION OF THE MACHINE

THE VDS-80 MACHINE PERFORMS TUBE CUTTING OPERATIONS. THE MACHINE CAN BE EQUIPPED WITH AN EXTERNAL HYDRAULIC POWER UNIT CONNECTED TO A TOOL FOR MAKING DIMPLE SIMULTANEOUSLY WITH THE CUT (MAX WORK DIAMETER Ø80)

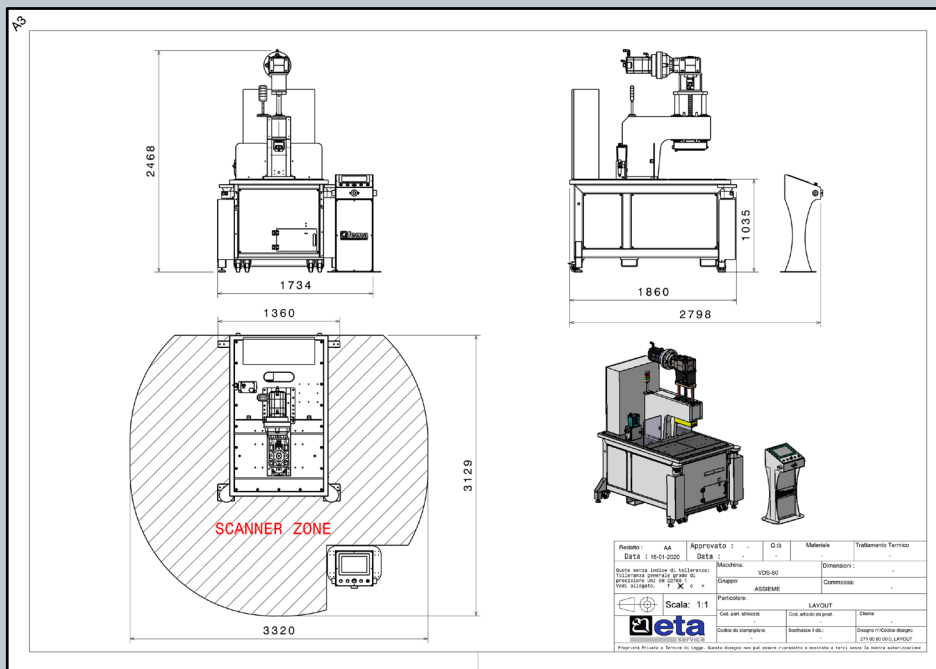
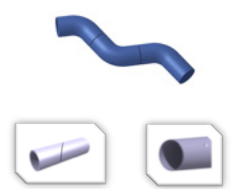
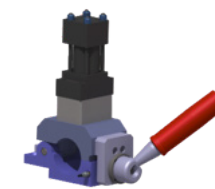


BASE FRAME
WHEEL KIT FOR MACHINE MOVEMENT
PLC FOR MACHINE CONTROL
START BY TWO HANDS
PROGRAMMING KEYBOARD (TOUCH-SCREEN)
ELECTRONIC CONTROL OF WORK QUOTAS
ELECTRICAL CABINET ON BOARD THE MACHINE
MAGNETIC OR ELECTROMECHANICAL SAFETY SWITCHES
SAFETY COVERS

SAWING TOOL



DIMPLE TOOL



TECHNICAL SPECIFICATIONS

Tension: 400V	Work diameter: 35-80 mm
Frequency: 50Hz	Average machine time (sec): 4/60
Auxiliar circuits Tension: 24V	Average set up time (min): 3 x tool + 3 x blade
Width (mm): 1360	Max/min diameter of blade: 425/275mm
Lenght (mm): 1860	Max/min blade pitch: 5/3 mm
Height (mm): 2468	Max cutting speed: 150m/min
Weight Kg: 1600	Max cut angle: 50°

OPTIONAL

DESCRIPTION

External hydraulic power unit	Hydraulic unit for connected a special tool to perform dimple during the cut
Metal fence with light curtains	Replaces the laser scanner and the two-hand control, installation area is reduced
Remote assistance System	Remote assistance system via internet