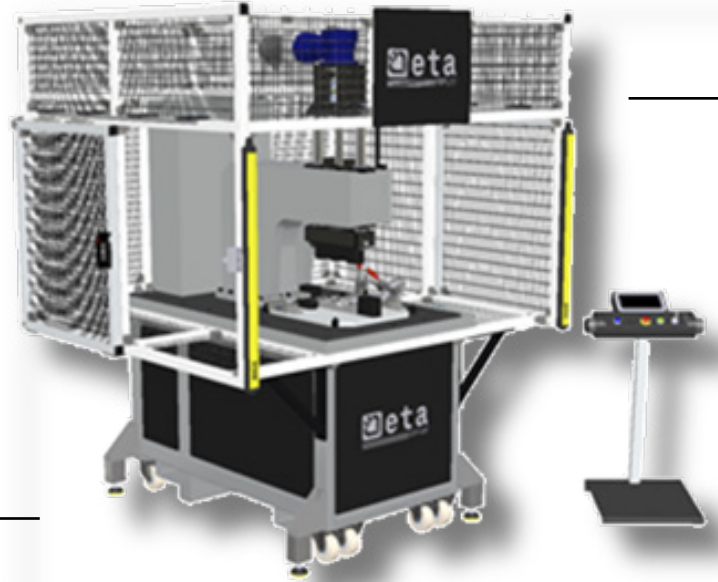


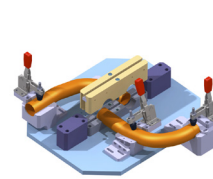
DESCRIPTION OF THE MACHINE

THE VDS-70 MACHINE PERFORMS TUBE CUTTING OPERATIONS. THE MACHINE CAN BE EQUIPPED WITH AN EXTERNAL HYDRAULIC POWER UNIT CONNECTED TO A TOOL FOR MAKING DIMPLES, DURING THE CUT (MAX WORK DIAMETER Ø80)

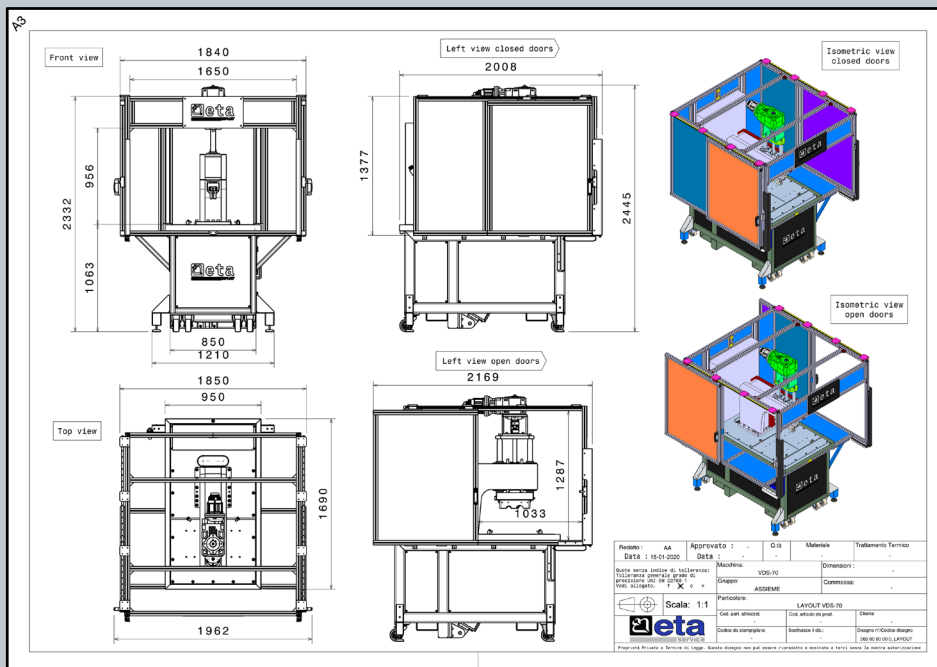
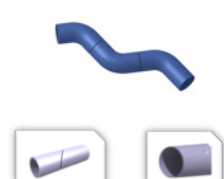


BASE FRAME
WHEEL KIT FOR MACHINE MOVEMENT
PLC FOR MACHINE CONTROL
START BY TWO HANDS
PROGRAMMING KEYBOARD (TOUCH-SCREEN)
ELECTRONIC CONTROL OF WORK QUOTAS
ELECTRICAL CABINET ON BOARD THE MACHINE
MAGNETIC OR ELECTROMECHANICAL SAFETY SWITCHES
SAFETY COVERS

SAWING TOOL



DIMPLE TOOL



TECHNICAL SPECIFICATIONS

Tension: 400V	Work diameter: 35-70 mm
Frequency: 50Hz	Average machine time (sec): 20/100
Auxiliar circuits Tension: 24V	Average set up time (min): 3 x tool + 5 x blade
Width (mm): 1850	Max/min diameter of blade: 425/400mm
Lenght (mm): 2008	Blade pitch: 5 mm
Height (mm): 2445	Cutting speed: 32 or 16 m/min
Weight Kg: 1800	Max cut angle: 50°

OPTIONAL

DESCRIPTION

External hydraulic power unit	Hydraulic unit for connected a special tool to perform dimple during the cut
Remote assistance System	Remote assistance system via internet
Laser scanner	Replaces the Metal fence with light curtains, the machine working plane is free from constraints and it's possible cut very long pipe