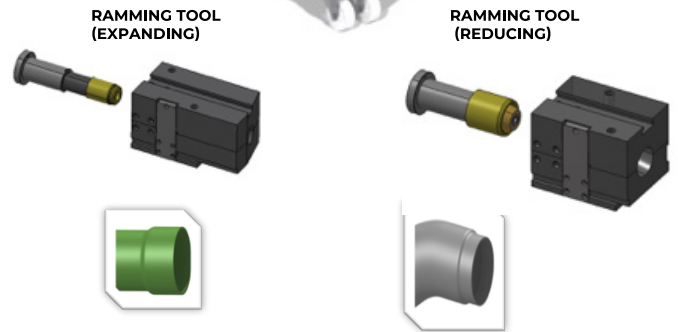


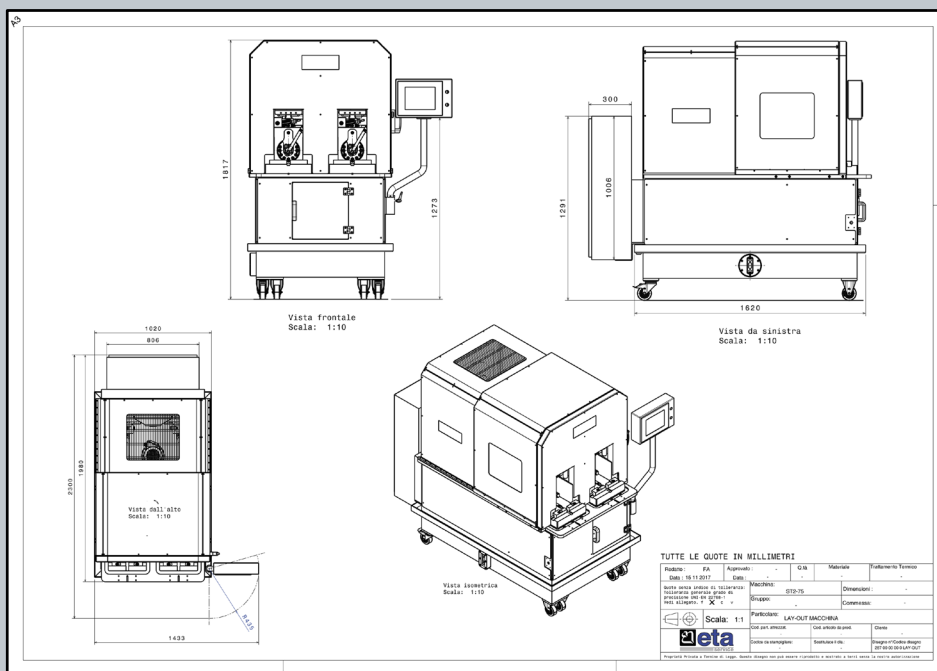
## DESCRIPTION OF THE MACHINE

THE MACHINE IS BUILT TO PERFORM ENLARGEMENT AND / OR REDUCTION ENDS OF PIPES, USING DEDICATED TOOLING.

N°2 RAMMING STATIONS - N°1 PASS (each Station)  
(WORK DIAMETER Ø80)



FRAME WITH BUILT-IN HYDRAULIC UNIT
WHEEL KIT FOR MACHINE MOVEMENT
PLC FOR MACHINE CONTROL
BIMANUAL CONTROL FOR START CYCLE
PROGRAMMING KEYBOARD (TOUCH SCREEN)
ELECTRONIC CONTROL OF WORK QUOTAS
ELECTRICAL CABINET ON BOARD THE MACHINE
MAGNETIC OR ELECTROMECHANICAL SAFETY SWITCHES
SAFETY COVERS
MANUAL ADJUSTABLE STOP



## TECHNICAL SPECIFICATIONS

<b>Tension:</b> 400V	<b>MAX calibration lenght:</b> 80mm (dependent thickness / diameter)
<b>Frequency:</b> 50Hz	<b>MAX reduction:</b> 8mm single step
<b>Auxiliar circuits Tension:</b> 24V	<b>MAX enlargement:</b> 8mm single step
<b>Width (mm):</b> 1020	<b>Pipe Thickness MAX:</b> 2mm
<b>Lenght (mm):</b> 1980	<b>Power of the upper pad clamp:</b> 24 Ton
<b>Height (mm):</b> 1817	<b>Max stroke of the pad clamp:</b> 150mm
<b>Weight Kg:</b> 2000	<b>Power of the axial punch:</b> 24 Ton
<b>Work diameter:</b> 35-80 mm	<b>Max stroke of the punch:</b> 150mm
<b>Average machine time (sec):</b> 2/5	<b>Max height available for mounting tool:</b> 338mm
<b>Average set up time (min):</b> 5	

## OPTIONAL

## DESCRIPTION

<b>Hoist</b>	<b>Hoist 200Kg for lifting tools, incorporated in the machine</b>
<b>Front plate</b>	<b>Table incorporated with the machine for blocking positioners</b>
<b>Remote assistance System</b>	<b>Remote assistance system via internet</b>
<b>Objectivation sensors</b>	<b>Connector for piece presence sensor or special cycles.</b>
<b>Trolley</b>	<b>Trolleys on wheels to facilitate the loading / unloading of the equipment on the machine</b>
<b>OK / NOK piece control heads</b>	<b>Plug for conformal piece checking during the work cycle</b>
<b>Metal fence with light curtains</b>	<b>Replaces the front mobile cover</b>
<b>Motorization for adjustable stop</b>	<b>The movement of the stop is motorized</b>