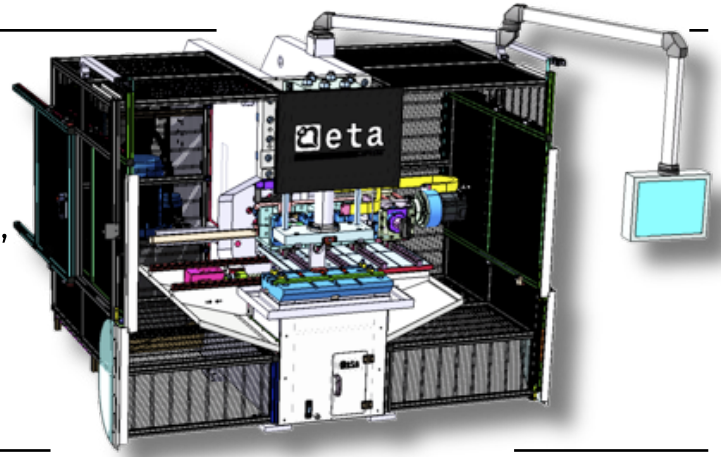


DESCRIPTION OF THE MACHINE

THE MACHINE REALIZES SERIES OF PROCESSES SHAPING THE ENDS OF STEEL PIPES AS FLARING, EXPANDING, ETC., USING DEDICATED TOOLING.

N°1 RAMMING STATION – N°3-4 PASSES

(WORK DIAMETER Ø150)

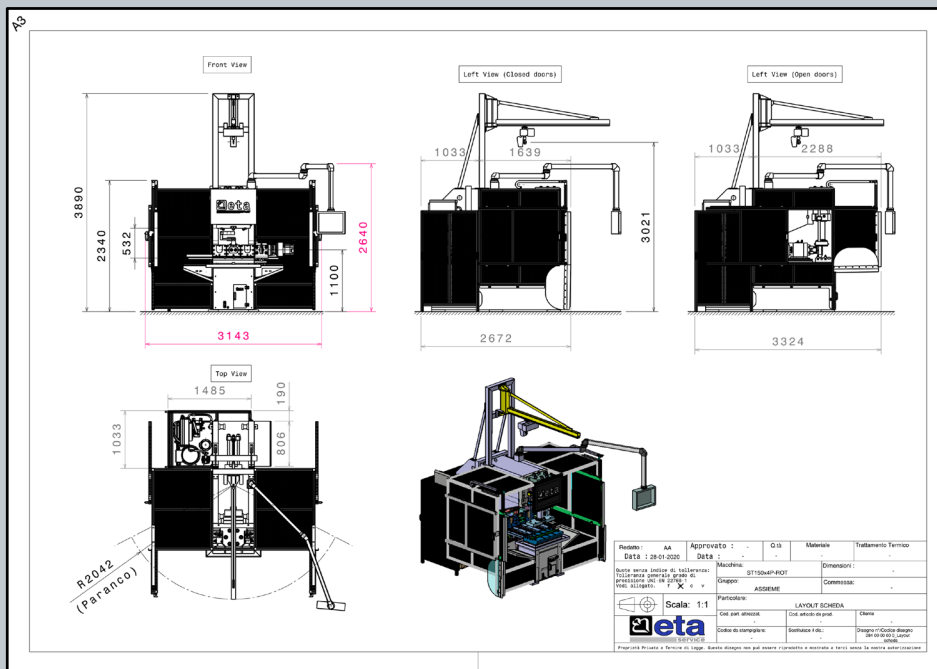
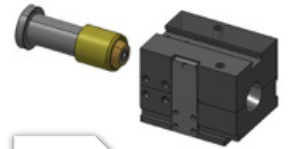


FRAME WITH BUILT-IN HYDRAULIC UNIT
PLC FOR MACHINE CONTROL
PUSH-BUTTON PANEL OR PEDAL BOARD FOR CYCLE START
PROGRAMMING KEYBOARD (TOUCH SCREEN)
ELECTRONIC CONTROL OF WORKING QUOTAS
ELECTRICAL CABINET ON BOARD
MAGNETIC OR ELECTROMECHANICAL SAFETY SWITCHES
SAFETY COVERS

RAMMING TOOL (EXPANDING)



RAMMING TOOL (REDUCING)



TECHNICAL SPECIFICATIONS

Tension: 400V	MAX calibration lenght: 80mm (dependent thickness / diameter)
Frequency: 50Hz	MAX reduction: 15mm single step
Auxiliar circuits Tension: 24V	MAX enlargement: 15mm single step
Width (mm): 3143	Pipe Thickness MAX: 2mm
Lenght (mm): 2672	Power of the upper pad clamp: 45 Ton
Height (mm): 2340	Max stroke of the pad clamp: 300mm
Weight Kg: 12000 (without oil)	Power of the axial punch: 32 Ton
Work diameter: 30-150 mm	Max stroke of the punch: 370mm
Average machine time (sec): 5/10	Max height available for mounting tool: 532mm
Average set up time (min): 10/15	

OPTIONAL

DESCRIPTION

Hoist	Hoist 200Kg for lifting tools, incorporated in the machine
Remote assistance System	Remote assistance system via internet
Objectivation sensors	Connector for piece presence sensor or special cycles
Laser scanner	Replaces the light curtains
Motorized head	It is possible to insert a motorized head to perform operations such as: boring, end milling, chamfering etc.
Trolley	Trolleys on wheels to facilitate the loading / unloading of the equipment on the machine
OK / NOK piece control heads	Plug for conformal piece checking during the work cycle