

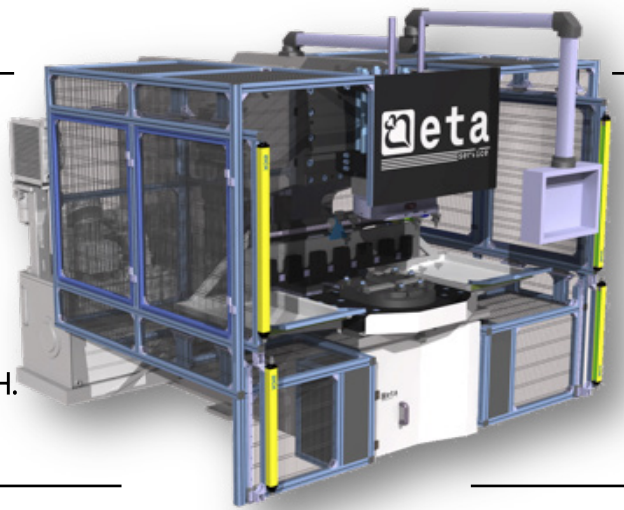
## DESCRIPTION OF THE MACHINE

THE MACHINE REALIZES SERIES OF PROCESSES SHAPING THE ENDS OF STEEL PIPES AS FLARING, EXPANDING, ETC., USING DEDICATED TOOLING.

WITH THE POSSIBILITY OF ROTATION OF THE VISE, THE MACHINING CAN BE PERFORMED ON BOTH ENDS, IN THE CASE OF PIPES BOTH CURVED OR OF LIMITED LENGTH.

N°1 RAMMING STATION - N°6 PASSES.

(WORK DIAMETER Ø100)

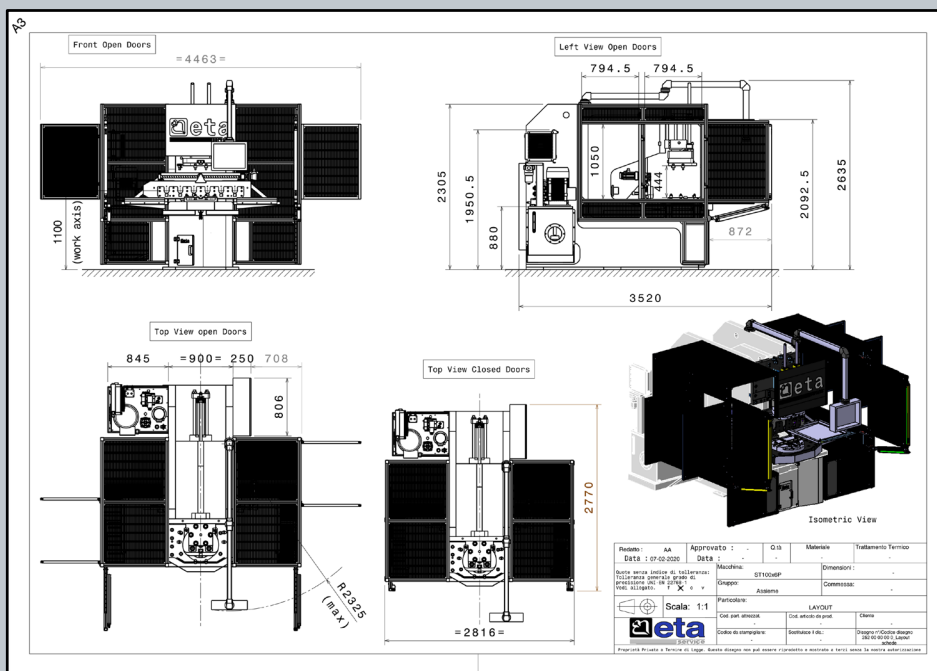
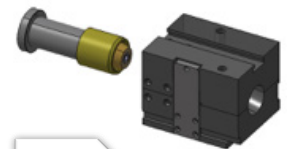


FRAME WITH BUILT-IN HYDRAULIC UNIT
PLC FOR MACHINE CONTROL
PUSH-BUTTON PANEL OR PEDAL BOARD FOR CYCLE START
PROGRAMMING KEYBOARD (TOUCH SCREEN)
ELECTRONIC CONTROL OF WORKING QUOTAS
ELECTRICAL CABINET ON BOARD
MAGNETIC OR ELECTROMECHANICAL SAFETY SWITCHES
SAFETY COVERS

RAMMING TOOL (EXPANDING)



RAMMING TOOL (REDUCING)



## TECHNICAL SPECIFICATIONS

<b>Tension:</b> 400V	<b>MAX calibration lenght:</b> 80mm dependent thickness / diameter)
<b>Frequency:</b> 50Hz	<b>MAX reduction:</b> 10mm single step
<b>Auxiliar circuits Tension:</b> 24V	<b>MAX enlargement:</b> 10mm single step
<b>Width (mm):</b> 2816	<b>Pipe Thickness MAX:</b> 2mm
<b>Lenght (mm):</b> 2770	<b>Power of the upper pad clamp:</b> 45 Ton
<b>Height (mm):</b> 2635	<b>Max stroke of the pad clamp:</b> 300mm
<b>Weight Kg:</b> 12000 (without oil)	<b>Power of the axial punch:</b> 32 Ton
<b>Work diameter:</b> 30-100 mm	<b>Max stroke of the punch:</b> 450mm
<b>Average machine time (sec):</b> 5/10	<b>Max height available for mounting tool:</b> 444mm
<b>Average set up time (min):</b> 10/15	

## OPTIONAL

## DESCRIPTION

<b>Hoist</b>	<b>Hoist 200Kg for lifting tools, incorporated in the machine</b>
<b>Remote assistance System</b>	<b>Remote assistance system via internet</b>
<b>Objectivation sensors</b>	<b>Connector for piece presence sensor or special cycles.</b>
<b>Laser scanner</b>	<b>Replaces the light curtains</b>
<b>Motorized head</b>	<b>It is possible to insert a motorized head to perform operations such as: boring, end milling, chamfering etc.</b>
<b>Trolley</b>	<b>Trolleys on wheels to facilitate the loading / unloading of the equipment on the machine</b>
<b>OK / NOK piece control heads</b>	<b>Plug for conformal piece checking during the work cycle</b>