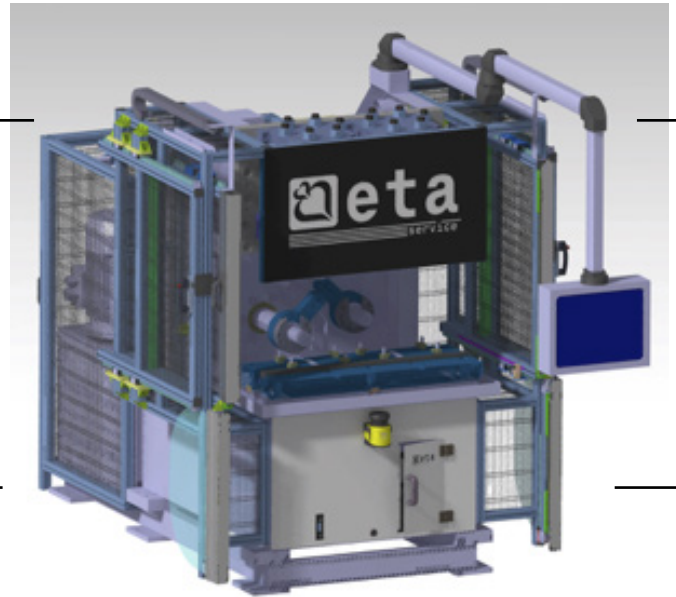


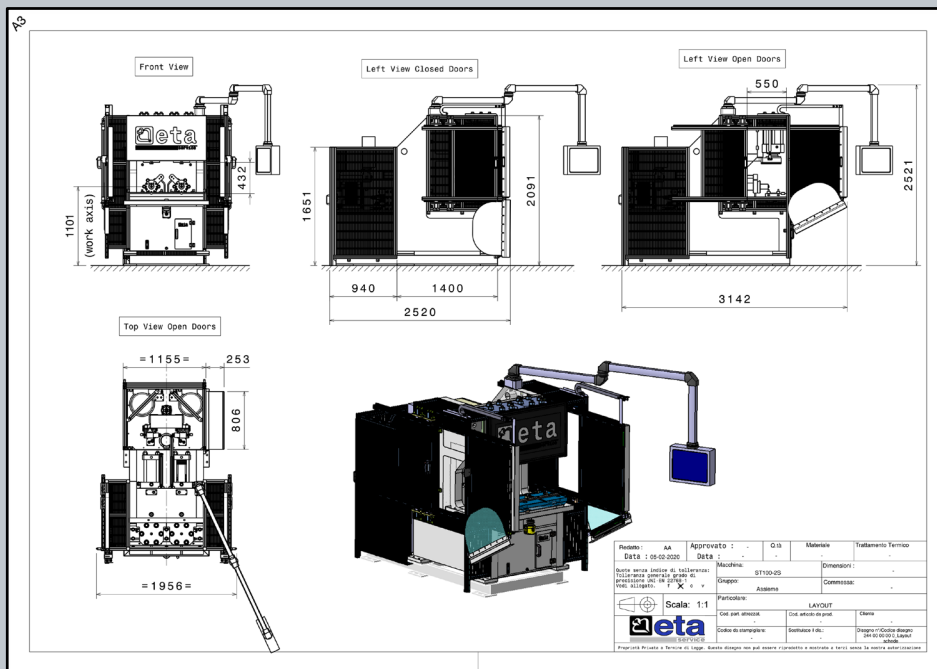
## DESCRIPTION OF THE MACHINE

THE MACHINE REALIZES SERIES OF PROCESSES SHAPING THE ENDS OF STEEL PIPES AS FLARING, EXPANDING, ETC., USING DEDICATED TOOLING.

N°2 RAMMING STATION - N°1 PASS (each station)  
(WORK DIAMETER Ø100)



FRAME WITH BUILT-IN HYDRAULIC UNIT
PLC FOR MACHINE CONTROL
BIMANUAL CONTROL FOR START CYCLE
PROGRAMMING KEYBOARD (TOUCH SCREEN)
ELECTRONIC CONTROL OF WORKING QUOTAS
ELECTRICAL CABINET ON BOARD THE MACHINE
MAGNETIC OR ELECTROMECHANICAL SAFETY SWITCHES
SAFETY COVERS
MOTORIZED ADJUSTABLE STOP



## TECHNICAL SPECIFICATIONS

<b>Tension:</b> 400V	<b>MAX calibration lenght:</b> 80mm (dependent thickness / diameter)
<b>Frequency:</b> 50Hz	<b>MAX reduction:</b> 10mm single step
<b>Auxiliar circuits Tension:</b> 24V	<b>MAX enlargement:</b> 10mm single step
<b>Width (mm):</b> 1956	<b>Pipe Thickness MAX:</b> 2mm
<b>Lenght (mm):</b> 2520	<b>Power of the upper pad clamp:</b> 38 Ton (each vice)
<b>Height (mm):</b> 2521	<b>Max stroke of the pad clamp:</b> 250mm
<b>Weight Kg:</b> 9600 (without oil)	<b>Power of the axial punch:</b> 24 Ton (each Axial cylinder)
<b>Work diameter:</b> 30-100 mm	<b>Max stroke of the punch:</b> 250mm
<b>Average machine time (sec):</b> 5/10	<b>Max height available for mounting tool:</b> 432mm
<b>Average set up time (min):</b> 10/15	

## OPTIONAL

## DESCRIPTION

<b>Hoist</b>	<b>Hoist 200Kg for lifting tools, incorporated in the machine</b>
<b>Remote assistance System</b>	<b>Remote assistance system via internet</b>
<b>Objectivation sensors</b>	<b>Connector for piece presence sensor or special cycles</b>
<b>Laser scanner</b>	<b>Replaces the light curtains</b>
<b>Motorized head</b>	<b>It is possible to insert a motorized head to perform operations such as: boring, end milling, chamfering etc.</b>
<b>Trolley</b>	<b>Trolleys on wheels to facilitate the loading / unloading of the equipment on the machine</b>
<b>OK / NOK piece control heads</b>	<b>Plug for conformal piece checking during the work cycle</b>