

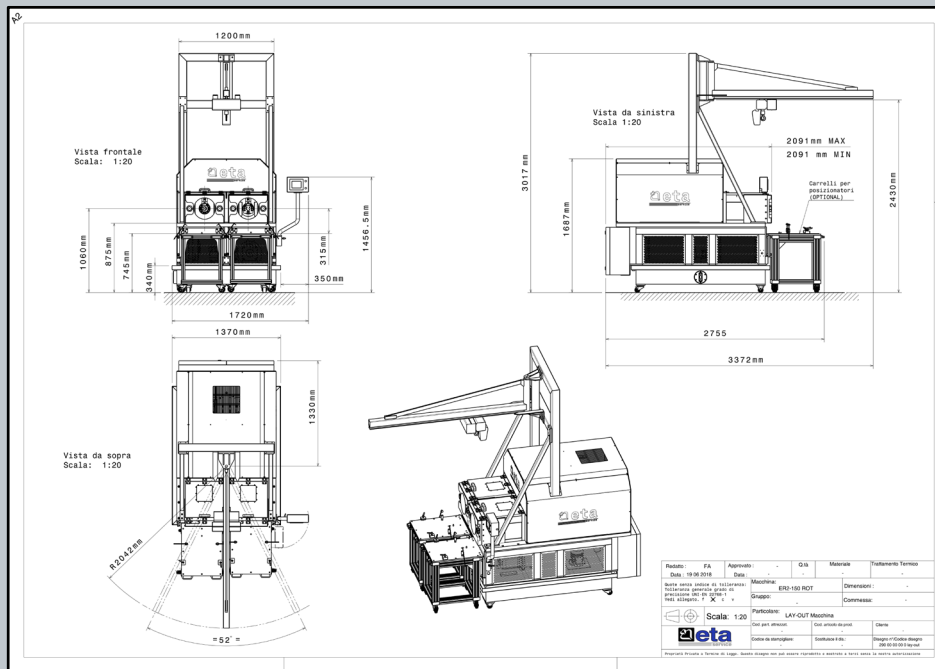
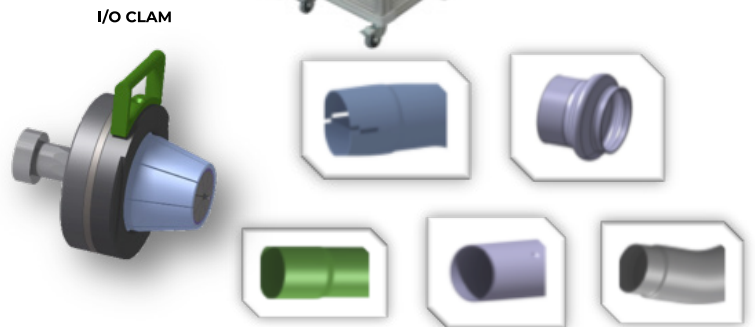
DESCRIPTION OF THE MACHINE

THE MACHINE IS BUILT TO PERFORM ENLARGEMENT AND / OR REDUCTION ENDS OF PIPES, USING SPECIAL RADIAL TOOLS.

THE MACHINE IS EQUIPPED WITH A MOTOR THAT ALLOWS ROTATION OF THE TOOL IT'S POSSIBLE TO MAKE DIMPLE BY SPECIAL TOOL (WORK DIAMETER Ø150)



FRAME WITH BUILT-IN HYDRAULIC UNIT
WHEEL KIT FOR MACHINE MOVEMENT
PLC FOR MACHINE CONTROL
PUSH-BUTTON PANEL OR PEDAL BOARD FOR CYCLE START
PROGRAMMING KEYBOARD (TOUCH SCREEN)
ELECTRONIC CONTROL OF WORKING QUOTAS
ELECTRICAL CABINET ON BOARD
MAGNETIC OR ELECTROMECHANICAL SAFETY SWITCHES
SAFETY COVERS



TECHNICAL SPECIFICATIONS

Tension: 400V	Work diameter: 35-150 mm
Frequency: 50Hz	MAX calibration length: 120mm (dependent thickness / diameter)
Auxiliar circuits Tension: 24V	MAX reduction: 8mm single step
Width (mm): 1370	MAX enlargement: 8mm single step
Length (mm): 2010	Pipe Thickness MAX: 2.5mm
Height (mm): 1690	Average machine time (sec): 4/60
Weight Kg: 4600	Average set up time (min): 5

OPTIONAL

DESCRIPTION

Hoist	Hoist 200Kg for lifting tools, incorporated in the machine
Front plate	Table incorporated with the machine for blocking positioners
Remote assistance System	Remote assistance system via internet
Objectivation sensors	Connector for piece presence sensor or special cycles
OK / NOK piece control heads	Plug for conformal piece checking during the work cycle